

Your Guide to

GOODLAND

& Sherman County Kansas

Stay A Night

Stay A Lifetime

www.gogoodlandks.com

SHERMAN COUNTY

Welcomes You

*"They came to stay" and we
hope you will too. Whether
its for a short time, a long
time or permanently. We
want you to feel at home
and welcomed here in
Sherman County, Kansas.*



Sherman County Clerk
813 Broadway, Rm 102
Goodland, Kansas 67735
Janet Rumpel • 785-890-4800
Genealogical information; old
newspapers; animal brand
and old school information

**Sherman County Convention &
Visitors Bureau**
925 Main • P.O. Box 927
Goodland, Kansas 67735
Donna Price • 785-890-3515
Complimentary maps, visitors
guides, attraction information

**Sherman County Economic
Development**
104 East 10th • P.O. Box 614
Goodland, Kansas 67735
Tiffani McMinn • 785-890-3743
Business relocation information
and Development incentives

Sherman County Treasurer
813 Broadway, Rm 103
Goodland, Kansas 67735
Iris Scheopner • 785-890-4810

**Sherman County
Health Department**
1622 Broadway
Goodland, Kansas 67735
Dorendo Harrel • 785-890-4888

Sherman County Sheriff
813 1/2 Broadway
Goodland, Kansas 67735
Kevin Butts • 785-890-4860

**Sherman County
Extension Office**
Fairgrounds information
Dana Belshe • 785-890-4880

Sherman County Public Works
County maps
1004 West Eighth
Goodland, Kansas 67735
Curt Way • 785-890-4865



BANKWEST
OF KANSAS



SUNWEST
BANKS OF COLORADO

*With Over 100 Years Of
Experience. We Invite You To
Visit Any Of Our Locations.*

www.ebankwest.com

1-888-828-2265
BANKLINE

ATMs

Goodland, KS

BP 24/7

Cowboy Loop
Drive Up Facility

Idalia, CO

Bank Entryway

St. Francis, KS

Bank Lobby
K-Store

Sharon Springs

Stephens Restaurant

OFFERING A VARIETY OF SERVICES

- CHECKING ACCOUNTS
- MONEY MARKET ACCOUNTS
- BUSINESS CHECKING ACCOUNTS
 - SAVINGS ACCOUNTS
 - CONSUMER LOANS
 - COMMERCIAL LOANS
 - MORTGAGE LOANS
 - HOME EQUITY LOANS
 - AGRICULTURE LOANS
 - DEBIT CARDS
- SAFETY DEPOSIT BOX RENTAL
 - ONLINE BANKING

GOODLAND

924 Main
Goodland, KS
67735
(785)899-2342

COLBY

295 N. Franklin
Colby, KS
67701
(785)462-7557

ST. FRANCIS

121 W. Washington
St. Francis, KS
67756
(785)332-3333

IDALIA

9073 County Rd.
CC.8
Idalia, CO
80735
(970)354-7229

SHARON SPRINGS

Loan Production Office
130 N. Main • Sharon Springs, KS
67758
(785)852-5374



INTRODUCTION

Who to contact



Welcome to Goodland and Sherman County, Kansas. Welcome, friends, to the good life in Goodland and Sherman County, Kansas. Welcome to the land of wide open spaces and friendly faces, of beautiful sunsets and star-filled nights. We invite you to visit us and do so soon. Stay a night or a lifetime. Either way, you'll fondly remember the time you spend with us. How to Learn more: If you want to visit, contact the Goodland/ Sherman County Convention & Visitors Bureau, Goodland, KS 67735. Call 888-824-4222 or 785-890-3515 or point your browser to: www.goodlandnet.com/cvb, E-mail at cvb@goodlandnet.com. If you're interested in business opportunities or relocating your business, contact Sherman County Economic Development, 104 E. 10th, Goodland, KS 67735, 785-890-3743, www.gogoodlandks.com

TABLE OF CONTENTS

Cover	
Inside Front Cover	Sherman County
Page 1	BANKWEST OF KANSAS
Page 2	Welcome Letter and contents page
Page 3	Convention & Visitors Bureau
Page 4	City Map
Page 5	Calendar of Events
Page 6	Housing Schools & Hospital
Page 7	Sherman County Economic Development
Page 8-9	Van Gogh and other attractions
Page 10-11	Lodging
Page 12-13	Hunting & Agritourism
Page 14	Industrial Park, Airport and Rail
Page 15	The Future of Energy and Agribusiness
Page 16	Community Profile
Page 17 and on	Advertisers

All area codes for Sherman County are 785

SHERMAN COUNTY

CONVENTION & VISITORS BUREAU

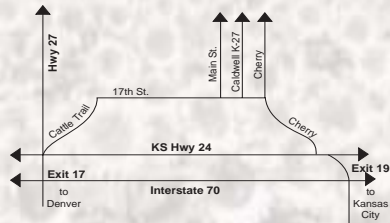
- Giant Van Gogh Painting
- Replica of the First Patented Helicopter
- 1907 Victorian Home Tour
- Site of the Kidder Massacre
- High Plains Museum
- 18-Hole Golf Course
- Aquatic Park

SEASONAL EVENTS

- Sunflower Expo
- Flatlander Fall Festival
- Holiday Craft Fairs
- Motorcycle Rally - Largest in Tri-State Area
- Rod Run - Biggest on a mile long brick street

ACCOMMODATIONS

- Motels
- Bed & Breakfasts
- Campgrounds
- Public Parks
- Variety of Food Service



Sherman County Convention & Visitors Bureau

925 Main Street
 P.O. Box 927
 Goodland, KS 67735
 1-888-824-4222
 785-890-3515
 Web Site:
www.goodlandnet.com/cvb
 E-mail:
cvb@goodlandnet.com

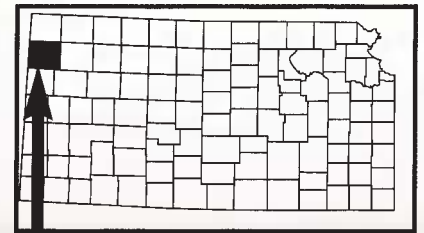


*Stay a Night,
 Stay a Lifetime*

Hunt in the Trophy Capital of Kansas

Distances to our Hunter's Paradise:

- Albuquerque 520
- Chicago 916
- Dallas 652
- Denver 192
- Kansas City 410
- Omaha 414
- St. Louis 667
- Wichita 341



GOODLAND MAP

How to get around...



CALENDAR OF EVENTS

Last Weekend of April – Home Show, for more information call 785-899-2309.

June 23 and 24, 2007 – “Slice of Life” Benefit Auction & Golf (3 person team) Tournament. The auction will be held on Saturday at the VFW and the Golf Tournament on Sunday at Sugar Hills Golf Club. Call 785-890-6036 for more information. Corporate sponsorships available. Please call for dates in 2008.

July 4 – Freedom Fest, 785-890-3515.

First week of August – Northwest Kansas District Free Fair, 785-890-4886.

Last weekend of September – Flatlander Fall Festival, Main Street from 8th to 17th, Includes street festival, motorcycle rally, car show and other activities. Goodland, 785-890-3515 or 785-890-9290. <http://www.flatlanderfestival.com/>

Last weekend of September – Northwest Kansas Motorcycle Show – Motorcycle show that features American, Asian, European and Custom Classed, Rodeo Bike Games, food, dance and “After Dark Motorcycle Parade.” Contact: Casey Quint 785-899-6492 or nwkbs@msn.com.

Last weekend of September – Early Iron Rod Run – Pre-1949; 1949 to 1972; and 1973 to present. Event includes continental breakfast, supper, dance, fun walk, door prizes and dash plaques. Contact Scott Lockhart at earlyiron_goodland@hotmail.com or call 785-899-5137.

Last weekend of September Annual Flatlander Fall Classic, Sherman County Speedway, 6:30 p.m., 785-821-1128 or 785-890-5103.

First Friday of October – Kara Bentzinger Memorial Gymkhana, Sherman County Fairgrounds. Rodeo activities for all ages, including, barrel racing, pole bending, roping, goat tying, and more. Call 785-233-6320, website: www.karamemorial.org

Third Saturday of November – NU PHI MU Sorority Craft Fair – Max Jones Fieldhouse, 13th and Arcade. Craft fair

with food and craft booths. Artists in the tri-state area showcase their talents. Something for everyone. For more information call 785-899-5430.

Third Saturday of November – VFW’s “We Did It Craft Fair” – Craft fair with food and craft booths. Artists in the tri-state area showcase their talents. Something for everyone. For more information please call 785-899-4756.

Monthly & Special Events

Carnegie Arts Center – Special showings and events take place monthly. More information is available at 120 W. 12th, 785-890-6442.

Sugar Hills Golf Club – Tournaments and other timely information, the only 18- hole golf course between Denver and Hays, can be obtained by calling 785-899-2785.

Smokey Garden Archery Club – Special shoots and events take place during the spring, summer and fall months. The range is located east on 18th Street and east of Arcade by the railroad tracks. For additional information call Chuck Engel 785-890-5174 or William McKnight 785-890-5358.

Sherman County Speedway — Summer Months - Sherman County Speedway, stockcar races. For additional information, 785-821-1128 or 785-890-5103.

Sugar Hills Golf Club – Golf Tournaments take place spring, summer, and fall, Sugar Hills Golf Club, 785-899-2785

Cole Family Farms Corn Maze

New Maze, New Attractions, New Events, Great Family Fun.

Keep your “ears” open, and get ready to get lost September '07 and '08! <http://www.colefamilyfarms.com/> or call for more info. 785-899-2132

RESIDENTIAL SCHOOLS AND HOSPITAL



Residential: Quote *“Growing up in Goodland was ideal for me as it provided a safe, caring community with many excellent opportunities to develop as a well rounded individual. After attending college and working in larger cities, Melanie and I wanted to raise our family in a place that could give our children the same advantages we had in our youth. At the same time, we wanted to be able to be part of and contribute to the community as active adult members. Knowing the strength and character of the people in the community, moving back to Goodland to establish my medical practice was an easy decision for us, and we couldn’t be happier to call Goodland our home.”*

Dr. Travis Daise M.D.

For a list of houses please check out www.goodlandksmls.com

Schools:

The Goodland School district USD #352, serves all of Sherman County, K-12, with elementary

through job placement. Known as an innovative leader within the state’s education community, the college at Goodland stands ready to provide employers with qualified, professionally-trained employees.

Hospital:

222 W. 2nd St.
Goodland, KS 67735
Phone: 785-890-3625
Fax 785-890-7209
www.goodlandregional.com

Your Access to Quality HealthCare!
Our mission is to provide high quality, community based primary care; access to

schools, a Jr. High and a Class 4A High School. Head Start, works with pre-school aged children 3-4, providing meals health care and information, academic social curriculum and provide exposure ready to kindergarten. For 40 years, post-secondary education in the Tri-State Area has centered around the beautiful, 24 building Northwest Kansas Technical College campus. Throughout Kansas, Colorado and Nebraska students have depended on Northwest Kansas Technical College at Goodland for quality education encompassing career exploration

specialized health services; and help to our patients and families during their healthcare experience. Everyone deserves a healthy, relaxing vacation. If an emergency or unexpected illness should occur while you are away from home, it’s comforting to know professional medical care is available to tend to you and your loved ones. Goodland Regional Medical Center is general acute care hospital, licensed for 49 beds and has a comprehensive consultant program.



SHERMAN COUNTY

ECONOMIC DEVELOPMENT

*If you dream it,
we can make it happen!*



If you're interested in starting your own business or are thinking of relocation an existing business, we can help.

Average Cost of Housing	\$39,868
Average Cost of Rentals	\$300.00 - \$450/00
Average Taxes	\$50,000.00 home \$867.00 \$100,000.00 home \$1,734.00
# of Real Estate Agencies	6
# of Realtors	17



Housing: (www.goodlandksmls.com)
- Free Land in Industrial Park -

Kyle Railroad • Renner Field Airport
Available Infrastructure • Development Incentives
Affordable Housing • Outstanding Quality of Life

Highways Serving the Community:

Interstate (E-W) I-70

U.S. Kansas (N-S) US 27 • U.S. Kansas (E-W) US 24

SHERMAN COUNTY ECONOMIC DEVELOPMENT
P.O. Box 614 - 104 East 10th • 785-890-3743 • Goodland, KS 67735
Email: shermanecodevo@yahoo.com / Website: www.gogoodlandks.com

VAN GOGH STORY

The big easel...

Easel stands 80 feet high, weighs 40,000 pounds

The Big Easel project began in 1996 when an artist and teacher, Cameron Cross, decided to contribute a work of art to the city in which he was teaching, Altona, Canada. Cross decided an enlarged hand painted reproduction of one of Vincent van Gogh's sunflower paintings, a public domain painting, resting on an enormous easel would make an appropriate landmark for the city.

The project soon began to take on a much larger scope. Cross decided to expand the project to seven easels, with the easel acting as an internationally recognized symbol of art.

With two easels already completed (Altona, Manitoba, Canada and Emerald, Queensland, Australia) Cross approached the city of Goodland, Kansas for the third easel site.

Cross met with various groups in Goodland, and construction started the following year.

The Goodland easel is the third painting in the van Gogh project. Goodland was chosen as a site for the international van Gogh Project due to its close connection to sunflower agriculture. The painting now complete and the easel were erected in June of 2001.

The intent of this project is to reproduce all seven of van Gogh's sunflower paintings, on giant easels in seven different counties spanning the globe.

Van Gogh originally created these seven paintings during his stay in Arles, France between the

years of 1888-1889. Each easel will feature a reproduction of one of van Gogh's seven sunflower paintings, and will be placed in communities where sunflowers are a prominent part of local agriculture or a connection to van Gogh exists. The sculptures will serve as a unique attraction for tourists and surrounding communities.

The Steel Easel

The steel easel is 80 ft. tall, with a design wind load of 38 pounds per square foot. The easel weighs 40,000 pounds, with 24 three-foot long anchor support bolts, and 30 feet deep pilings.

The Paint

The paint used for the artwork is industrial acrylic urethane enamel. The paint is normally used on ships, fertilizer equipment and machinery that are exposed to extreme heat, acid or chemicals. The paint was chosen for its long-lasting qualities and ultraviolet protection. About 10 layers of acrylic urethane enamel were used to finish the work of art. Each painting takes approximately two months to complete, which involves 10 to 12 hour workdays.

The Canvas

The 24-foot by 32-foot canvas consists of 24 sheets of standard four-by-eight plywood sheets, two layers of one-ounce matte fiberglass, covered in a layer of industrial gel coat. The canvas is attached to the frame with over 500 high-performance self-tapping (wood to steel) fastener screws.



HIGH PLAINS MUSEUM

1717 Cherry • 785-890-4595
Home of America's First Patented Helicopter and early Sherman County history.

Hours: Monday – Saturday, 9 a.m. to 5 p.m., Sunday, 1 to 4 p.m.

No admission charge, donations welcomed
Approx. Time: 1 Hour

GOODLAND ARTS CENTER

12TH and Center • 785-890-6442
New exhibits every four to six weeks. Housed in a former Carnegie Library and listed on the National Register of Historic Places.

Hours: Tuesday – Friday, 10 a.m. to 5 p.m., Sunday 1 to 3 p.m.

No admission charge, donations welcomed.

Approximate Time: 1 hour

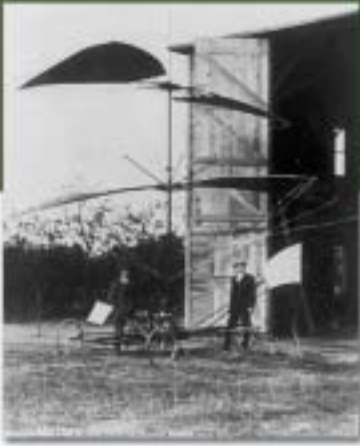
SHERMAN THEATRE

1203 Main • 899-6103
Please call for current showings and events.

Admission charged

Approximate Time: 2 hours

ATTRACTIONS



Special events and groups welcome. Admission Charged.

KIDDER MASSACRE SITE

8 miles east on Highway 24 to

The van Gogh project features a reproduction of one of Vincent van Gogh's seven sunflower paintings. The idea for the project is the brainchild of Canadian Artist, Cameron Cross. The painting is painted on a 24 ft. by 32 ft. canvas and sits on an easel which is nearly 80 ft. tall.

STEEVER WATER PARK

785-890-4525 • 1622

Arcade

Come play in our water park. The park has two water slides, wading pool, water fountain feature and of course a large pool.

Please call for hours.

Admission charged.

NATIONAL WEATHER SERVICE

N. Caldwell to Armory Road east 1/2 mile

785-899-7119

Weather predictions and forecasts by latest Doppler System, one of five in Kansas.

Hours: 8 a.m. to 5 p.m.

Please call to arrange tours. Group tours are available.

No admission charge

Approximate Time: 1 hour 30 minutes

COLE FAMILY FARMS MAZE

1200 E. 8th St.

From I-70, take exit 17 north to 8th St. Turn right, through the city until you see the sign on the east edge of town.

785-899-2132

Opening Dates: Middle of Sept.

Closing Date: End of Oct.

Corn maze and pumpkin patch along with many family activities to keep the whole family entertained.

1867 Battle on the Beaver Creek, brochure with map available.

Hours: Daylight

No Admission Charge

HANDY-ENNIS 1907 VICTORIAN RESIDENCE TOUR

202 W. 13th • 785-899-6773

Enjoy a guided tour through an exquisite Victorian Home. The home was acquired by the Sherman County Historical Society and is now open for tours and special events.

Please call for hours

Admission Charged

GIANT VAN GOGH PAINTING ON A GIANT EASEL

Business Highway and Cherry
785-890-3515

County Road 28 – North 18 miles.

785-890-3515

The site of

SUGAR HILLS GOLF COURSE

785-899-2785 • 6450 Road 16

The only 18-hole golf course between Denver Colorado and Hays Kansas.

Take Highway 24 west four miles, and then north at the sign. The course has a driving range, pro-shop, clubhouse, dining room, golf carts and other amenities.

Fees Charged.

HISTORIC DRIVING TOUR

For information and brochure for the self-guided tour please contact High Plains Museum at 1717 Cherry or call 785-890-4595.

No charge

GOODLAND PUBLIC LIBRARY

785-890-5461 • 812 Broadway

Hours: Monday – Thursday 10 a.m. to 7 p.m.; Fri.-Saturday. 10 a.m. to 5 p.m.

ANTIQUÉ WAREHOUSE

785-899-5965 • 1701 Main

Hours: Monday-Saturday 10 a.m. - 5 p.m. Sunday by chance

LODGING

Stay a night...

Best Western Buffalo Inn

830 West Highway 24

Reservations: 785-899-3621

Web site: www.bestwesternkansas.com

Location: I-70 Exit 17 or Exit 19, Hwy. 24

Accommodations: 93 Rooms, King/Queen Beds-Suites-Meeting Rooms-Conference Center Restaurant

Special Features: Full Free Breakfast, Indoor Swimming Pool, Kiddie Pool & Hot Tub, Handicap Accessible, Fax and Internet, Nonsmoking Rooms, 24 Hour Front Desk, Free Local Telephone, Cable Television, Laundry, Pets Allowed, Quiet Location, Owner on Site.

Comfort Inn

2519 Enterprise

785-899-7181

Reservations: 800-228-5150

Web site: www.comfortinn.com/hotel_ks009

Location: I-70 Exit 17

Accommodations: 49 Rooms, King/Queen Beds, Suites, Meeting Rooms

Special Features: Indoor Swimming Pool and Hot Tub, Handicap Accessible, Free Continental Breakfast, Fax and Internet, Nonsmoking Rooms, 24 Hour Front Desk, Free Local Telephone, Cable Television, Laundry, Pets Allowed, Free Newspaper, Coffee Pot and Hair Dryers.

Holiday Inn Express Hotel & Suites

2631 Enterprise Rd.

Goodland, KS 67735

Reservations:

Toll Free: (800) 465-4329

Newly opened in February 2007. One of the most recognized hotels in the hospitality industry. This is the newest hotel in Goodland and welcomes guests to enjoy the wonderful amenities that await their arrival.

Features: Breakfast included, Meeting facilities, Indoor pool, Hot tub, Exercise room, Pets allowed, Wireless internet, Accessible parking/accommodations.

Web site: www.ichotelsgroup.com/h/d/ex/1/en/home

Howard Johnson Hotel

2218 Commerce

Phone: 785-890-3644

Reservations: 877-465-6526

Web site: www.hojokansas.com

Location: I-70 Exit 17

Accommodations: 78 Rooms, King/Queen Beds-Home Office Suites, Meeting Rooms, Restaurant/Lounge on Premises.

Special Features: Indoor Olympic size Pool, Sauna, Whirlpool, Kids Play Area, Putting Green, Video Games, Pool Tables, Exercise Equipment, In Room Coffee Makers, Fax and Internet, Guest Laundry, Free TV, 60 Channel Cable with 3/HBO, Room Service, Pets Welcome.

Economy 9

2420 Commerce Road

Reservations: 785-899-5672

Location: I-70 Exit 17

Accommodations: 84 Rooms

Special Features: Outdoor Swimming Pool, Across Street from Fast-food Restaurants, Handicap Accessible, Nonsmoking Rooms, Free Local Calls, Full Cable with HBO, Pets allowed, Fax and Internet, Truck Parking, 24 Hour Front Desk, Guest Laundry, Children 17 and under Free with Parents.

Motel 7

811 E Hwy 24

Goodland, KS 67735

Phone: (785) 899-6614

E-mail: merchant2003@earthlink.net

Motel with daily, weekly, and monthly rates.

Features: coffemakers, microwaves, and refrigerators in all rooms. Wireless Internet in lobby and high speed Internet in some rooms. Full HBO which includes Spanish. Group rates and low daily, weekly, and monthly rates available. All major credit cards and debit cards accepted including direct billing.

Special Features: Breakfast included, Pets allowed, In-room high speed Internet, Wireless internet.

Super 8

2520 S. Hwy. 27

785-890-7566 (Phone/Fax)

Reservations: 800-800-8000

Web site: www.super8.com

Location: I-70 Exit 17, Hwy 27

Accommodations: 47 Rooms, King/Queen Beds-Suites, Meeting Room

Special Features: 24 Hour Front Desk, Pets with permission, Continental Breakfast, Toast Bar, Large Vehicle Parking, Free Local Calls, Cable Televisions, Group Rates, Cribs Free, Weekly Rates, Nonsmoking Rooms, Fax.

Bed and Breakfast & Hunting Lodges

Prairie Castle Guest House

Bed & Breakfast

2733 Rd 75

Edson, KS 67735

Phone: (785) 899-5306

Web site: www.kuhrtranch.com/

E-mail: info@kuhrtranch.com

This castle offers historic ambiance with contemporary comforts. House was originally built in 1907. In 1934, Pauline Kuhrt fashioned the house after German castles. The house was remodeled and faced with native limestone, immediately deserving of the name given by the community as the Prairie Castle. The white oak wooden floors, original woodwork, and antique furnishings tell of days gone by while providing comfort for all who stay. This home is still heated with the original radiator steam heat, listed on the National Historic Register.

Features: Pets allowed, Rates starting from \$75.00, Hunting, Hunting guide service, Shooting sports, Kenneling/gun dogs, Upland birds, Deer, Turkey, Meeting rooms, Meals available, Outdoor activities.

Shaps Beaver Creek Ranch

6404 Rd 23

Goodland, KS 67735

Phone: (785) 899-5942

Web site: www.shapsranch.com

E-mail: shapsranch@st-tel.net

Get away from the fast pace of the city and stay in our rustic cabin. You will have some of the comforts of your home, and all of the view! A wide variety of packages to choose from. Turkey, Quail, Pheasant, Mule and Whitetail deer among the species that you can hunt on our property. Features: Hunting, Hunting guide service, Shooting sports, Upland birds, Deer, Turkey

Campgrounds

Goodland KOA

1114 E. Hwy. 24

Reservations: 785-890-5701

Web site:

Location: I-70 Exit 19, Hwy. 24

Accommodations & Special Features: Major Credit Cards Accepted, Kamping Kabins, Hot Showers, Laundry, Playground, Clean Restrooms, Swimming Pool, Pets on Leash Welcome, Cable Hookups, Tent Sites, Mini Gold, Convenience, Souvenir and Gift Shop.

Mid America Camp-Inn

R.R. 1, Box 97

Reservations: 785-899-5431

Location: I-70 Exit 17, South on K-27

Special Features: Tiled Restrooms and Showers, Large Pull Through Sites with Concrete Pads, Cable TV, 20-30-50 Amp Electric, RV Supplies, Groceries, Gifts, Souvenirs, Ice, Swimming Pool, Playground, Tents Welcome.

Howard Johnson-Newly Renovated!

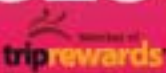
Goodland, KS • I-70 Exit 17 • HBO/Internet



- Rise-N-Dine Breakfast
- 10,000 Square Foot Recreation Dome
- Lounge-Restaurant-Interior Rooms
- Pet-friendly - Hunters Pampered
- 24-hour Security

877-465-6526

or **785-890-3644**



Welcome to the Goodland, KS Super 8 Motel



Free SuperStart® Breakfast • Suites • HBO

Free Wireless High Speed Internet • Microwave & Refrigerator in Every Room • Pet w/Permission & Deposit • Iron & Ironing Board

I-70 Exit 17 • 2520 Commerce Road • Goodland, KS 67735

785-890-7566

800-800-8000 • super8.com



See you along the way.®



73 Rooms
Indoor Pool & Spa
Fitness Center
Meeting Rooms

Business Center
Complimentary
Breakfast
Wireless Hi-Speed
Internet

Exit 17 Interstate 70
Goodland, KS 67735

Toll Free: 1-888-HOLIDAY (888-465-4329)

www.hiexpress.com



- Open for Special Events
- 4000 acres of contiguous land operated for hunting and other outdoor adventure
- Renovation of the historic Kuhrt Ranch barn will take place in 2007

The Prairie Castle Bed and Breakfast, Kuhrt Ranch Lodge, is listed on the National Register of Historic Places

2735 Road 75 • 785-899-5306 • Edson, KS 67733
E-mail: kuhrtranch1@aol.com / www.kuhrtranch.com

HUNTING

WHAT TO SEE AND DO

Do you love to hunt?

Hunting licenses and walk-in hunting atlases are available online at www.kdwp.state.ks.us. Walk-in hunting atlases are also available at the Kansas Travel Information Center.

Do you love to hunt? If so, you're looking at the right place — Sherman County, Trophy Capital of Kansas. From pheasants to buffalo, prairie dogs to deer and antelope, hunt in Sherman County and bring home the trophy of a lifetime.

Pheasant hunting has always been a hunting mainstay in Sherman County. Along with the game mentioned above, turkey and rabbits continue to gain popularity. Mule deer are especially well adapted to the area.

Walk-In Hunting Area (WIHA) acres abound in Sherman County with 11,874 acres on 28 tracts of land registered in 2000. Many WIHA sites are also in the Conservation Reserve Program and offer wonderful



upland bird hunting opportunities. Other areas include stubble fields bordered by woodlands, which is excellent deer habitat. Hunting is permitted in most walk-in hunting areas from Sept. 1 or Nov. 1 to Jan. 31. If land is not posted as a WIHA, hunters must ask permission before hunting that land.

All firearms hunters must wear at least 200 square inches of blaze orange and an orange cap. Licenses are required for all fur-bearing animals, including prairie dogs.

Hunters who want a guide can find top

professionals in Sherman County ready to assist them in finding the perfect trophy. Local outfitters are available. Call Goodland/ Sherman County Convention and Visitors Bureau, 785/ 890-3515.

Additional information on Kansas hunting regulations may be found on the Kansas Department of Wildlife and Parks web site, www.kdwp.state.ks.us.



GOODLAND, KANSAS MID AMERICA CAMP



MID WAY - EAST OR WEST THROUGH MID AMERICA

- Clean Air • Cool Nights • 100% Hospitality*
- Tiled Rest Rooms & Showers
 - Large Pull-Thru Sites with Concrete Pads • Cable TV • 20-30-50 Amp Electric • RV Supplies • Free WiFi
 - Gifts • Souvenirs • Ice
 - Swimming Pool • Playground
 - Tents Welcome



Family Owned and Operated by
Karen and Scott Weber
(785) 899-5431
2802 Commerce Road
Goodland, KS 67735
www.midamericacamp.com

AGRITOURISM

WHAT TO SEE AND DO

Late in the High Plains summer, the sunflowers come into bloom, covering fields with a carpet of huge yellow flowers.

Two types of sunflowers are cultivated — oil and confectionary. Oil sunflower seeds are dark and are smaller than the striped confectionary seeds. Confectionary seeds are used for sunflower seeds and bird seed. Oil sunflowers are crushed for oil.

Recently, the United States has ranked among the world's top six nations in sunflower production. In the U.S., sunflowers are grown primarily in Kansas, Nebraska, Colorado, Texas, Oklahoma, the Dakotas and Minnesota, with the majority in Kansas. Goodland is one of two U.S. marketing centers.

In 1990, Kansas produced 75,000 bushels of sunflower seeds, while the rest of the Great Plains states produced 95,000 bushels. In 1999, Kansas produced 290,000 bushels while the other states produced 635,000.

Production continues to grow. The majority of the crop continues to be exported for oil, but, as the oil's benefits continue to be explored, U.S. consumption is growing. Goodland has two processing plants, both confectionary and oil processing.

Sherman County is home to Bryce and Jessica Cole, a farming family that have made this their home for generations. They operate **Cole Family Farms Corn Maze**, which includes a corn maze, pumpkin patch, attractions, events and a whole lot of family fun. Keep your "ears" open and get ready to get lost and have lots of fun with your family and friends. More information is available at www.colefamilyfarms.com or call 785-899-2132. Other agritourism adventures in the Sherman County Profile include the **Prairie Castle Guest House Bed & Breakfast, Kuhrt Ranch and Shaps Beaver Creek Ranch.**

Enjoy our oceans of beautiful yellow sunflowers and know their beauty is more than just skin deep.



Mid-August is the best time to photograph sunflowers, as they reach full bloom then. Full bloom is a very short period. For photography, light is best early morning or before twilight.

Sunflowers at the height of their bloom.



INDUSTRIAL PARK

AIRPORT AND RAIL



Industrial Park:

Free Land in
Goodland's
Industrial Park!

Looking to relocate or expand your business? Goodland has 32 acres of land along U.S. Hwy 27 available for development. For qualified businesses land could be available at no cost. The industrial park is located less than a mile off interstate I-70. Triple tractor trucks are allowed, rail access (rail spur if needed), and only two miles away from the Goodland Municipal Airport, Renner Field. Also available, (not in free land program), over 300 acres contiguous to Goodland's Energy Center. If you would like to know more about Goodland Industrial Park, please contact the Sherman County Economic Development Office, 785-890-3743 or e-mail questions to shermanecodevo@yahoo.com for more information.

Airport:

Don't flutter by; Stop at Butterfly! Renner Field is a great airport with complete service and repair. Flight for Life (Eagle Med) based here is prepared to handle your needs. Renner Field (GLD) is equipped for small corporate jets with two (5,499' and 3,501') lighted runways and an instrument landing system. Flight School and the Butterfly Cafe are also available on site. Enjoy home cooked meals and the delicious rolls and pies that are known from miles around. Butterfly Cafe is available for catering in town but also catering for planes flying in. Open 7 days a week 6 a.m. to 2 p.m. For more information on Butterfly Aviation please contact John and Marilyn Collett at 785-890-7531.

Rail:

In 1979, the trains stopped running through Northwest Kansas, devastating the region's agricultural based economy. But due to a strong pioneering spirit, and hard work, the trains are running again. The Kyle Railroad, now owned by RailAmerica Inc., has been operating over the old "Rock Island Line" since 1982, putting businesses and entire communities "back on track." Offering around the clock rail service, with interchange to two major carriers, there's nothing we can't do! For more information call Vince Como 785-543-9616

THE FUTURE OF ENERGY & AGRIBUSINESS

The diversification of the economy in Sherman County continues to grow. From the development of our energy center to crops and the cattle market our Agricultural based economy has made several steps towards the future. The combination of energy and Agribusinesses has made Sherman county a progressive place to call home.

The Goodland Energy Center...

is comprised of 3 separate and distinct plants. A 22 megawatt coal fired co-generation power plant, a 20 million gallon ethanol plant, and a 10 million gallon biodiesel plant.

The power plant will produce electricity and steam that will be available for sale to other entities.

Construction has begun on the plant, which is anticipated to be in production during 2007.

The ethanol plant will produce fuel grade ethanol and distiller's grains. The distiller's grains are a by-product of the ethanol process and are becoming a valuable commodity as a feed ration to cattle.

Construction on the ethanol plant has begun, and it is anticipated that this plant will be operational during 2007 as well.

The biodiesel plant will produce fuel grade biodiesel and glycerin as a by-product. Construction is expected to commence on this plant during the first quarter of 2007 and is anticipated to be operational during the first half of 2008.

For more information please call Goodland Energy Center, LLC 785-890-4321.



Mueller Grain Company

is a family-owned, independent

grain elevator business that has been in operation under the same ownership, and at the same location in Goodland, Kansas since 1949. They offer numerous storage and merchandising options for the area producer's grain. The primary crops handled at the elevator include wheat, corn, sunflowers, and millet. They also trade farm-stored wheat, corn, grain sorghum, soybeans, and sunflower directly from the farm to end-users. In addition, they assist producers with grain marketing and risk management. Their website, www.muellergrain.com, features daily grain bids, commodities futures information, daily grain and livestock market news and analysis, current weather information, and numerous other news items.

Mueller Grain Company currently employs 9 individuals at their Elevator and General Office location with length of service ranging from 5 to 25+ years.

MUELLER GRAIN COMPANY • General Office:
1632 Main Street • Elevator: 17th & Center
Streets, P.O. Box 116, Goodland, KS 67735,
www.muellergrain.com, Toll Free: 800-356-1130,
Phone: 785-890-3639, Fax: 785-899-2548



COMMUNITY PROFILE

Transportation

Air — Renner Field (GLD) is equipped for corporate jets with two (5,499' and 3,501') lighted runways and an instrument-landing system. Charter service is available, 785/890-7531.

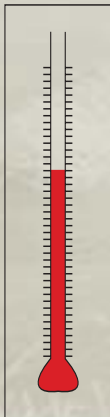
Highway — Goodland sits at the intersection of Interstate 70, U.S. Highway 24 and Kansas Highway 27.

Rail — Rail service is available with Kyle Railroad, 800/432-0572.

Goodland Climate

AVERAGE TEMPERATURE IN F°

	HI	LO
JANUARY	42	15
FEBRUARY	45	19
MARCH	53	25
APRIL	64	35
MAY	72	45
JUNE	83	55
JULY	90	61
AUGUST	87	59
SEPTEMBER	78	50
OCTOBER	67	38
NOVEMBER	52	26
DECEMBER	42	17



Facts and Figures

Elevation 3,565 ft. above sea level at Renner Field (Airport)
 Population in 2000. .City of Goodland: 5,134; Sherman County: 6,760
 Annual Average Precipitation 18 inches
 Annual Average Snowfall 32 inches
 Average Yearly Days of Sunshine 121
 Hospital Goodland Regional Medical Center, 49 beds
 Golf Course Sugar Hills Golf Club, 18 holes
 College Northwest Kansas Technical College
 Newspaper Goodland Star-News (bi-weekly)
 Television Station KBSL 10 (CBS)
 Radio Stations KLOE 730 AM, KKCI 102.5 FM, KWGB 97.9 FM
 Cable Television/High-Speed Internet
 S&T Communications, Eagle Cable
 Parks 9 city, 2 county
 Time Zone Mountain

Important Phone Numbers

All numbers start with area code 785 and all street addresses are in Goodland unless otherwise noted.

Emergency services

Ambulance, Fire, Police, Sheriff 911
 Goodland Regional Medical Center 890-3625 • 220 W. Second
 Prairieland Animal Clinic 899-6166 • 204 N. Caldwell
 Weather Forecast 899-7119
 Kansas Road Condition Hotline 800/585-ROAD (7523)

Tourist information

Goodland/Sherman County Welcome Center 890-3515 • 925 Main
 State of Kansas Tourist Information Center 899-6695
 Eastbound Interstate 70, milepost 7, east of Kanorado

Community information

Goodland/Sherman Co. Economic Development . . 890-3743 • 104 E. 10th
 Goodland Area Chamber of Commerce 899-7130
 Opera House Plaza, 1202 Main, Suite 101

Local government

City of Goodland 890-4500 • 204 West 11th
 City of Kanorado 399-2355 • 404 Center, Kanorado
 Sherman County 890-4800 • 813 Broadway
 USD 352-Goodland (school district) 890-2397 • 1312 Main

Distances from Goodland

Albuquerque 520	Los Angeles 1,221	Minneapolis 836
Chicago 916		New York 1,652
Dallas 652		Omaha 414
Denver 192		St. Louis 667
Kansas City 410		Wichita 341





Helping Goodland and Sherman County move forward by promoting business, community, and quality of life.

Goodland Area Chamber of Commerce
Andi Nelson, Executive Director

111 E. Tenth St. • Goodland, KS 67735 • 785.896.7130 • www.goodlandkschamber.com • gchamber@sigline.com

E.B.H. ENGINEERS SURVEYORS

& Associates

Evans – Bierly – Hutchison & Associates, P.A.



596 Airport Road
Goodland, KS 67735
(785) 899-7019

www.ebhinc.com

Offices in Great Bend, Cimarron, Goodland, Neodesha & Pratt



Midwest Energy, Inc.



"Making Energy Work For You"

Supporting Sherman County
and Northwest Kansas

1-800-222-3121
www.mwenergy.com



**CHECK OUT OUR
DOLLAR MENU**

McDonald's

Goodland • Burlington, Colo. • Lamar, Colo.

Enjoy the good life in Goodland!



Located on Interstate 70 just 17 miles from the Colorado border, Goodland offers travelers and visitors a warm welcome and provides everything necessary for a good life in a clean, healthy environment. We are dedicated to making Goodland the place to live, work, worship and play.

Visit Goodland's new water park and spend the day swimming or enjoying the water slides. Take time to visit our library complete with the latest Internet



technology, our museum, the Carnegie Arts Center, or just relax in one of our beautiful parks.

The Goodland Activities Center offers weight rooms, racquetball courts, aerobics and a variety of fitness machines.

Goodland Municipal Airport boasts a 5,000-foot concrete runway able to service business jet aircraft, a total-service repair facility, fuel facility, a licensed

charter service, and a full-service restaurant.

Goodland is home to the National Weather Service complete with Doppler Radar System.

Goodland has many fine retail stores to provide a variety of goods for the shopper. Our mile-long brick Main Street offers



plenty of parking and shopping ease.

Sugar Hills' golf course is a professionally designed 18-hole course and is considered one of the most challenging and beautiful in a wide area.

**Goodland offers something
for everyone.**

Visit us online at www.goodlandks.us



**Come and see us; enjoy
our hospitality and
friendly atmosphere.
We'll be waiting
for you!**



Local & Long Distance Telephone Service
 Internet & DSL or Cable Modem (High Speed Internet)
 Basic & Digital Cable
 Business Phone Systems
 Media Services: Ad Channel, Production,
 Commercial Insertions, Web Advertising, and Phone Directory
 Computer Services: Sales & Support, Networking
CELLULAR SERVICE NOW AVAILABLE!



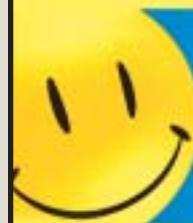
1318 Main
 Goodland KS 67735
 785-890-7400
 785-890-7404 Fax



www.sttelcom.com

Local People—Service—Solutions Go Local!!

WAL★MART SUPER CENTER



ALWAYS
LOW PRICES
 ALWAYS

2160 Commerce Road
 785/899-2111
For all your needs

Pharmacy
785/899-2266

- **16 Programs of Study**
- **Nationally Accredited**
- **Associate of Applied Science Degree or Technical Certificate**
- **Hands on Training**
- **Small Class Sizes**
- **Industry Trained Instructors**
- **Low Tuition Cost**
- **Job Placement Service**

NORTHWEST
 Kansas Technical College
 GOODLAND, KS



Putting Your Hands on the Future



Visit our beautiful campus



24 buildings on 50 acres with on campus housing.

CHECK US OUT ON THE WEB AT:
WWW.NWKTC.EDU
 CALL TODAY FOR MORE
 INFORMATION: 785-890-3641

The FRAMING PLACE

Quality custom matting & framing since 1983.



Photos, Art, Needlework, Shadowboxes, Sports Frames,
Mirrors, Military honors

404 Main • 785/890-5528
M-F 10-4 or by appointment

Explore pioneer life,
America's 1st patented
helicopter, dioramas & more!



High Plains Museum

1717 Cherry Ave. • Goodland, KS 67735
Phone: 785/890-4595

Call ahead for tours. Admission by donation
Hours: M-F 9 a.m.-5 p.m.; Sat. 9 a.m.-4 p.m.;
Sun. 1-4 p.m. June-August

RICHARDSON'S

HOMESTEAD

REALTY AND AUCTION

1023 MAIN ST.
GOODLAND, KS

THE LEADERS IN
NORTHWEST KANSAS
FOR OVER 20 YEARS!

1-800-974-2426
1-785-899-2328
www.GoodlandHomestead.com

Residential - Commercial
Farm - Ranch - Auctions

Terry Richardson
Donna Moore
Cynthia Butts

Call today **1.800.432.0266**



**Consolidated
Proudly Supports
All Advertisers
& Sherman County**



www.consolidatedprinting.com



- 32-foot wide screen
- Dolby Digital sound
- hearing-assisted headsets
- wheelchair accessible

1203 Main
785/899-6103

www.goodlandnet.com/movies

The Goodland Grind & Gallery, LLC



A Cure
for the
Common
Coffeehouse

Fine Beverages
Sandwiches ■ Soups
Pastries ■ Original Art
Sip, Savor, Shop

Hours

Monday: Closed, Available for Events
Tuesday: Closed, Available for Events
Wednesday: 8 a.m. - 8 p.m.
Thursday: 8 a.m. - 8 p.m.
Friday: 8 a.m. - 10 p.m.
Saturday: 8 a.m. - 10 p.m.
Sunday: 1 p.m. - 8 p.m.

1530 Main Street
Goodland, Kansas 67735
Ph: 785.890.7690 • Fax: 785.890.7691



DIRECTORY



Restaurants

24/7 2710 Commerce Rd. 899-7179
Bowladium Lanes 509 Caldwell 890-6246
Buffalo Inn Restaurant & Hotel 830 W. Hwy 24 890-5057
Butterfly Cafe Renner Field 890-2085
China Gardens 1108 Main 899-3345
Crazy R's Bar & Grill 1618 Main 890-3430
Dairy Queen 2402 Commerce Rd. 890-2041
El Reynaldo's 910 W. Hwy 24 899-7077
Gambino's Pizza 402 E. 17th 890-5988
Goodland Grind & Gallery 1530 Main 890-7691
Goodland Steakhouse and Diner 2310 Commerce Rd. 890-7015
Howard Johnson's Hotel and Harvest Restaurant 2218
Commerce Rd. 890-3644
McDonald's 2325 Enterprise Rd. 899-7371
Pizza Hut 1803 Cherry 899-3611
Presto Travel Center 2510 Commerce Rd. 899-7527
RubiDoll's Cowboy Loop 1631 Main 899-7100
Taco John's 2304 Commerce Rd. 890-8226
Stegman's Subway 2217 Enterprise Rd. 899-5245
Sugar Hills Golf Club 6450 Road 16 899-2785
WalMart Deli 2160 Commerce Rd 899-2111
Wendy's 2219 Enterprise Rd. 890-5948

Churches

Bible Baptist Church 424 Broadway Av. 890-7368
Calvary Gospel Church 402 College 890-3605
Church of Christ 401 Caldwell 890-6185
Church of Nazarene 305 Caldwell 899-2080
Emmanuel Lutheran Church (13th & Sherman) 222 W. 13th 890-6161
Harvest Evangelical Free Church 104 E. Hwy. 24 890-6423
First Baptist Church 12th & Main 890-3450
First Christian Church-Disciples of Christ 711 Arcade 890-5233
First United Methodist Church 12th & Sherman 899-3631
Goodland Bible Church 109 Willow Rd. 899-6400
Iglesia Del Dios Vivo 722 W. 16 /1601 Texas 899-5275
Kanorado United Methodist Church 307 Main 399-2468
Kingdom Hall of Jehovah's Witnesses 808 Wyoming 890-6421
Lutheran Church Emmanuel 222 W. 13th 890-6161
Nazarene Church 305 Caldwell 899-2080
Our Lady of Perpetual Help Catholic Church 307 W. 13th (13th &
Sherman) 899-7205
Pleasant Home Church 3190 Road 70 (5miles north of Edson)
694-2807
Promise Land Baptist Church 225 W. 16th 890-7944
St. Paul's Episcopal Church 121 W. 13th 890-2115
Seventh Day Adventist Church 1160 Cattletrail St. 899-7522
Sonrise Christian Church 905 Caldwell St. 899-5398
Word of Life Foursquare Church 223 E. 10th /10th & Clark 899-5250

Medical

Optometrists
Dr. David Schnee 601 E. Hwy 24 899-5501 or 1-800-864-4612
Mark Wahlmeier, O.D 110 W. 10th 899-3654

Dentists
James Baker 1009 Main 890-2562
Goodland Dental Arts 504 Main Ave 899-6222

Orthodontist
Christopher Lovell DDS MS 1014 Main 899-3025

Physicians
Goodland Family Health Center 106 Willow 890-6075
Dr. Kenneth Austin 110 W. 6th 899-7344
Tom Hellerud, ARNP 110 W. 6th 899-7344
Pioneer Health 910 Main 890-7950

Chiropractic
Clifton Porterfield DC 2233 Caldwell 899-2500
Unruh Family Chiropractic Center 1015 Main 899-2225

Pharmacies
Medical Arts Pharmacy 202 Willow Rd. 890-5111
Wal-Mart Pharmacy 2160 Commerce Rd. 899-2266

Oxygen
Lincare, Inc. 1013 Main 899-6848 or 888-966-4565

Activity Centers
Goodland Activities Center 808 Main 890-7242

Banks
BANKWEST OF KANSAS 924 Main St. 899-2342
First National Bank 202 E. 11th 890-2000
Peoples State Bank 1302 Main 890-2224
Western State Bank 815 Center 899-2393

Library
Goodland 812 Broadway 899-5461

Liquor Stores
Garrett's Liquor Store 918 Main 899-5972
Kears Quality Liquor 403 E. 17th 890-3276
Kamper Retail Liquor 426 W. Hwy 24 890-7479
Avalanche Liquor Mart 2213 Enterprise Rd. 890-7350

Locksmith
AAA Stage Stop Sinclair Towing 1802 Sandy Dr. 821-1509
Alex's Radiator & Auto Repair 531 W. 17th St. 899-7554
McB's Motor Repair 421 E. 17th St. 899-7375

Newspapers
Goodland Star News 1205 Main St. 899-2338

Post Offices
Goodland 124 E. 11th 899-7212
Edson 6419 Main 899-5890
Kanorado 202 Main 399-2790

Radio
KLOE/KKCI/KWGB 3023 W 31st 899-2309

Senior Center
Senior Adult Center 208 W. 15th Goodland 890-5082
Kanorado Senior Citizen 212 Main 399-2348

Telephone Companies
SBC 1-800-585-7928
S&T 1318 Main Goodland 890-7400/1-866-790-0243

Utilities
Aquila 1-800-303-0752
City of Goodland 204 W. 11th 899-4500
Midwest Energy 1-800-222-3121

Vet
Prairieland Animal Clinic 204 N. Caldwell 899-6166

Your Access to Quality Healthcare!

Goodland Regional Medical Center



Our mission is to provide high quality, community based primary care; access to specialized health services; and help to our patients and families during their healthcare experience.

Everyone deserves a healthy, relaxing vacation. If an emergency or unexpected illness should occur while you are away from home, it's comforting to know professional medical care is available to tend to you and your loved ones.

DIRECTORY OF SERVICES

Acute Care/Swingbed

Behavioral Health Services
Drug & Alcohol Counseling
Child & Adolescent Counseling
Individual, Group, Family & Marriage Counseling

Emergency Medical Services
Ambulance
24-Hour Emergency Room

Family Care Services
Board Certified Family Practice Physicians
Board Certified Urgent Care Medicine Physician
Certified Nurse Practitioner

Food Services
Diabetic Education
Nutritional Counseling

Laboratory

Medical Imaging
Diagnostic X-ray, CAT Scan,
Bone Densitometry, Ultrasound,
Nuclear Medicine, MRI

Physician Specialties

Allergy
Audiology
Cardiology
Counseling Services
Dermatology
Ear, Nose & Throat
Endocrinology
Gastroenterology
Gynecology
Neurology
Oncology/Hematology
Ophthalmology
Orthopedics

Psychiatry

Podiatry
Pulmonology
Radiology
Rheumatology
Speech Therapy
Surgery
Urology

Rehab Services

Occupational Therapy
Physical Therapy, Speech Therapy, Audiology & Counseling

Health Services

Childbirth Education
Patient Education
Diabetic Support Group
Cancer Support Group

Goodland Family Health Center
106 Willow Road • Goodland, KS 67735
785-890-6075

Goodland Regional Medical Center
220 W. 2nd Street • Goodland, KS 67735
785-890-3625

www.goodlandregional.com



FIRST NATIONAL BANK



Kansas

Bird City
Colby

Goodland

Oberlin
Quinter

Sharon Springs
St. Francis



Colorado

Bennett
Kirk

www.fnb.com
Member FDIC